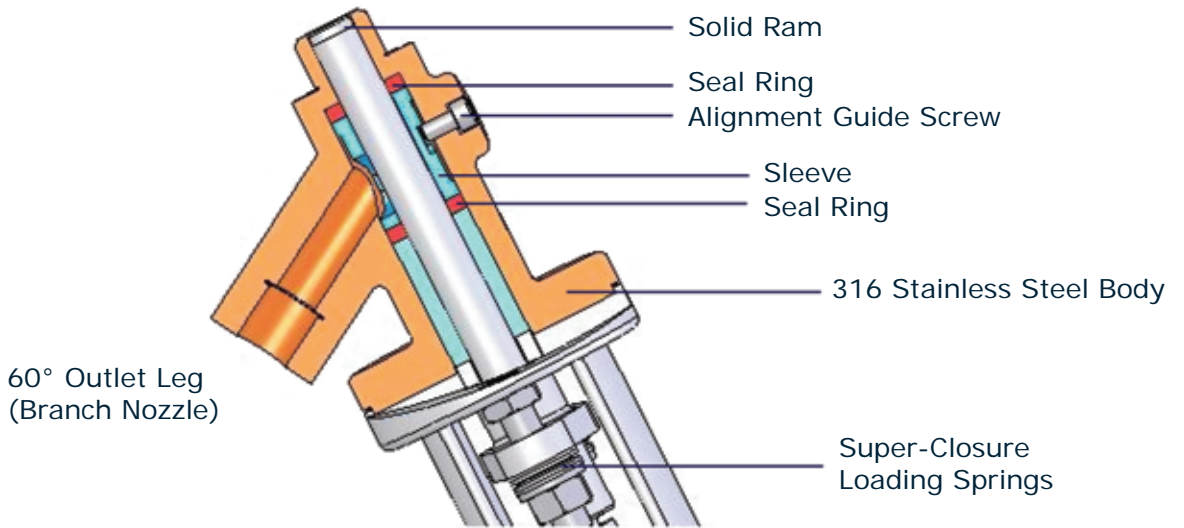
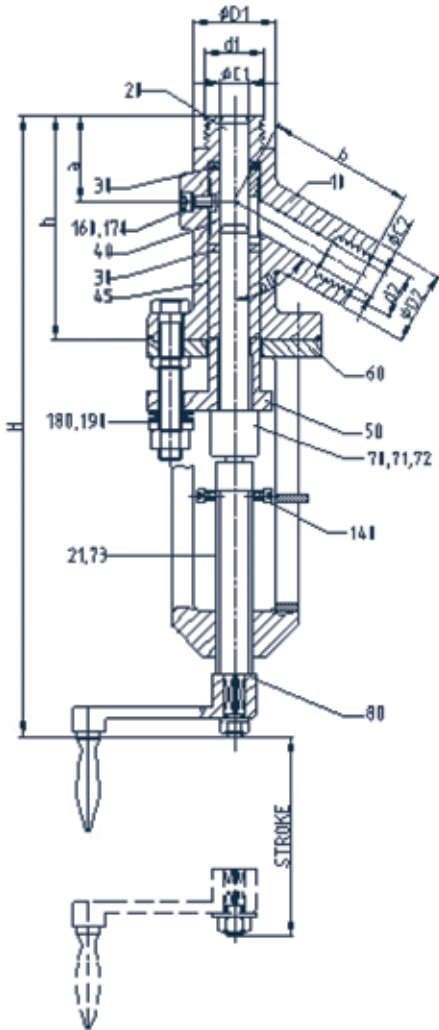


Model 32FR "Rod Seal" Sampling Valve



Model 32FR Parts List:



POS NO	DESCRIPTION	MATERIAL	QTY
10	BODY	ASTM GR.CF-8M / 14408	1
20	RAM	SS 316 / 14401	1
21	SPINDLE	SS416 / 14005	1
30	SEALING RING	PTFE / GLASS 25%	2
40	PRESSURE SLEEVE	SS 316 / 14401	1
45	GUIDE BUSH	SS 316 / 14401	1
50	STUFFING BOX	ASTM GR.CF-8M / 14408	1
60	YOKE	SS 303 / 14305	1
70	CONNECTING NUT	SS416 / 14005	1
71	ROLL / SPRING PIN	CARBON STEEL	1
72	STEM BUTTON	SS TYPE 17-4 PH / 14541	1
73	ROLL / SPRING PIN	CARBON STEEL	1
80	CRANK HANDLE	ASTM GR.CF-8 / 14308	1
140	INDICATOR	SS 303 / 14305	1
160	SOCKET HEAD CAP SCREW	A2-70	1
170	GASKET	FLUOROLOY K	2
180	CUP SPRING	14122	8
190	WASHER	A4	2

Dimension Table: (Sizes in inches, others in mm)

SIZE	Ø		NPT		ØC		a b		h	H	STROKE
	ØD1	ØD2	NPT	NPT	ØC1	ØC2	a	b			
1/2" x 1/2"	45	40	1/2"	1/2"	13	15	47	80	123	345	60
3/4" x 1/2"	45	40	3/4"	1/2"	16	15	47	80	123	345	60
3/4" x 3/4"	45	40	3/4"	3/4"	16	15	47	80	123	345	60
1" x 1/2"	45	40	1"	1/2"	16	15	47	80	123	345	60
1" x 3/4"	45	40	1"	3/4"	16	15	47	80	123	345	60
1 1/2" x 1"	60	45	1 1/2"	1"	25	25	47	90	140	360	65

Max. Temperature:
 PTFE Sealing Rings: 200°C
 Blue Guard Sealing Rings: 370°C

Pressure Rating:
 Valves rated to ASME 600